

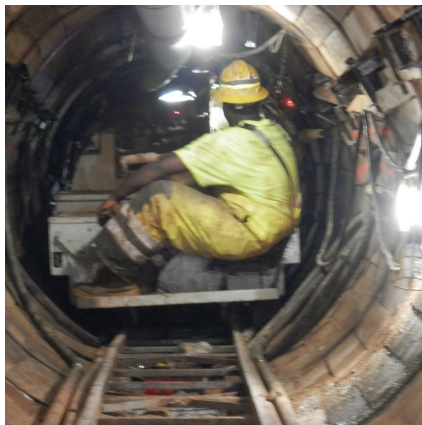
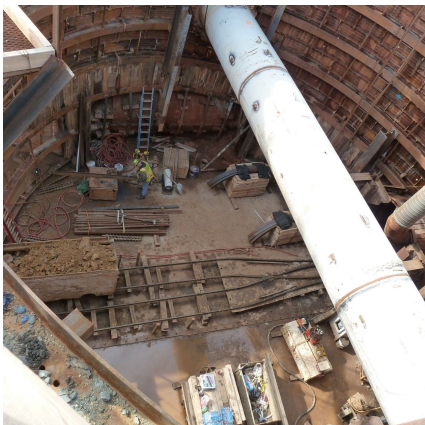
## DCW M Street Diversion Sewers Washington D.C.,



### PROJECT OVERVIEW AND CHALLENGES

Bradshaw completed installation of 1,313 linear feet of 144 inch, and 1,014 liner feet of 72 inch rib and board tunnel for 110 inch and 48 inch fiberglass reinforced sewer. An Akkerman BS-120 digger shield and an Akkerman WM-60 TBM were used to excavate the tunnels. The work was in a busy urban area adjacent to the Anacostia River and a CSX Railroad. The tunnel was excavated through clay and fill with the presence of boulders.

Additional challenges of the project included a launch shaft with a live sewer running through it, encountering an old, unidentified sewer, and soft, wet ground conditions prone to settlement and requiring ground modification.



### PROJECT INFORMATION - 519

#### OWNER:

DC Water & Sewer Authority  
Carlo Enciso  
(202) 787-2029  
carlo.enciso@dcwater.com

#### ENGINEER:

CDM  
William Taylor  
(703) 485-8500  
taylor.wk@cdm.com

#### CONTRACTOR:

Corman Construction

#### COMPLETION DATE:

5/30/2014

#### GEOLOGY:

Plastic Clay, Fill & Boulders

#### EXCAVATION METHOD:

Akkerman BS-120 Shield & WM-60  
TBM

#### MINING DIMENSIONS:

1,313' x 144 Ø" & 1,014' x 73.5"Ø

#### FINAL LINING:

48" & 110" Fiber Reinforced Pipe

#### FOR MORE INFORMATION:

Mike Wanhatalo, Project Manager  
(410) 970-8300  
mwanhatalo@bradshawcc.com  
Refer to Project 519