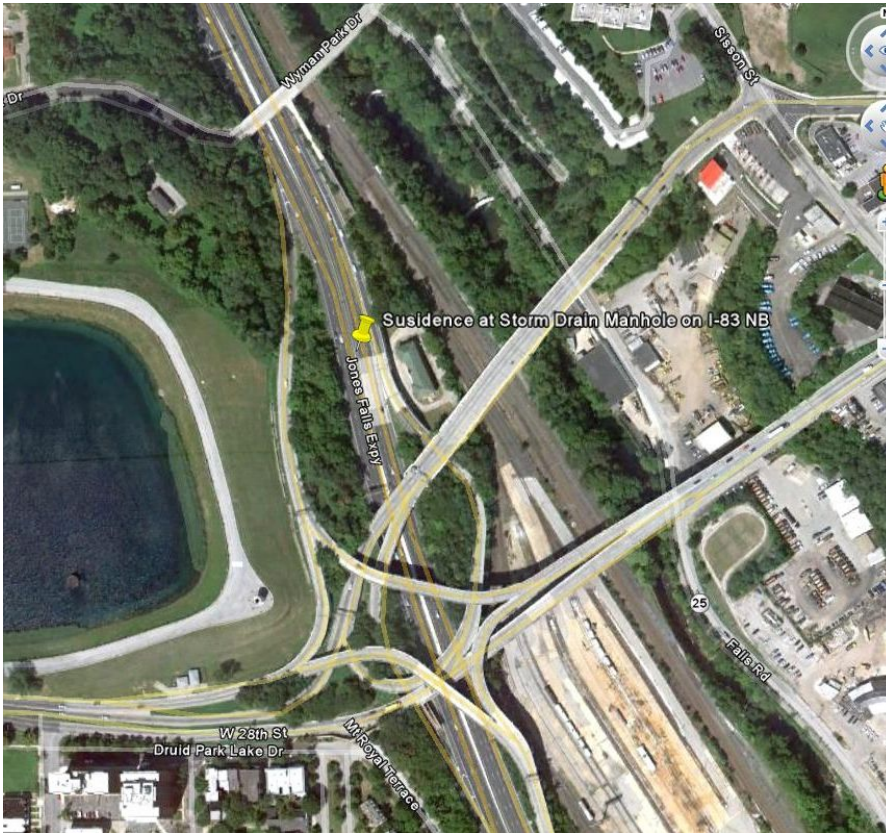


## I-83 Emergency Shaft Baltimore, MD



### PROJECT OVERVIEW AND CHALLENGES

Bradshaw Construction made emergency point utility repairs for 15 inch and 18 inch reinforced concrete in the median of I-83 in Baltimore, MD. A 24 foot, outer diameter, shaft which encompassed an active manhole was excavated and shored with steel liner plates to a depth of 24 feet. Bradshaw's scope included excavating and installing the shaft supports, replacing the broken pipes and backfilling the shaft. All work was performed on a 24-7 basis.



### PROJECT INFORMATION - 517

**OWNER:**

Baltimore City  
Department of Transportation  
(410) 396-6802

**ENGINEER:**

Rummel, Klepper, & Kahl, LLP  
Steve Phillips  
(410) 728-2900  
sphillips@rkk.com

**CONTRACTOR:**

John W. Brawner Contracting Co.,  
Inc.

**COMPLETION DATE:**

5/9/2012

**GEOLOGY:**

Silty Sand & Silt

**EXCAVATION METHOD:**

Hand Mine

**MINING DIMENSIONS:**

24' x 24VF

**FINAL LINING:**

Steel Liner Plate

**FOR MORE INFORMATION:**

Doug Piper, Chief Estimator  
(410) 970-8300  
dpiper@bradshawcc.com  
Refer to Project 517