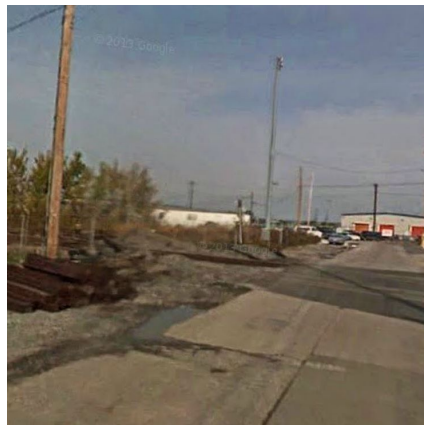


## Chesapeake Avenue Rehabilitation Baltimore, MD



### PROJECT OVERVIEW AND CHALLENGES

Bradshaw Construction installed twin tunnels of 42" RCP storm sewer 60' each under a railroad in Baltimore, MD. There were several challenges and delays on the project. All of which stemmed from conflicting permits and access issues. When the methodology of using a TBM for pipe-jacking 42" RCP was finally approved by all parties it was under the allowance that all tunneling work would take place during the weekend. This required the crew to set-up the TBM and have everything in place by Friday afternoon. Then, each tunnel had to be completed by the end of the shift on Sunday. Though it took some long shifts by the crew, both tunnels were completed in consecutive weekends



### PROJECT INFORMATION - 475

**OWNER:**

City of Baltimore

**ENGINEER:**

Gannett Fleming, Inc.

**CONTRACTOR:**

Monumental Paving & Excavating

**COMPLETION DATE:**

10/28/2009

**GEOLOGY:**

Soft Ground

**EXCAVATION METHOD:**

Akkerman WM 420C

**MINING DIMENSIONS:**

120' x 51" Ø

**FINAL LINING:**

42" Reinforced Concrete Pipe

**FOR MORE INFORMATION:**

Mike Wanhatalo, Project  
Engineer/Estimator

410-970-8307

[mwanhatalo@bradshawcc.com](mailto:mwanhatalo@bradshawcc.com)

Refer to Project 475