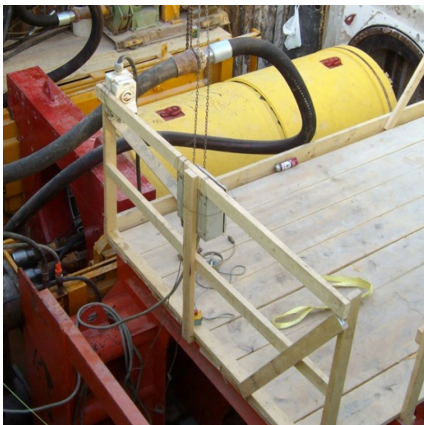


## 12th Street Force Main Replacement Tampa, FL



### PROJECT OVERVIEW AND CHALLENGES

Bradshaw Construction was part in a Tampa Design/Build project. This project consisted of 3 separate drives mined by microtunneling. The first drive consisted of 477 linear feet for 60 inch steel casing to accommodate a 48 inch force main. The second was 450 linear feet and the third at a length of 1,290 linear feet for 60 inch steel casing for a 42 inch force main. These drives were for utility crossings at the Hillsborough River, Martin Luther King Boulevard / Ida Street, and also Hillsborough Avenue. The soil conditions were soft and below the water table.



### PROJECT INFORMATION - 466

#### OWNER:

City of Tampa  
Eric Weiss  
(813) 274-8121

#### ENGINEER:

CH2MHill  
Randy Houston  
(813) 874-0777

#### CONTRACTOR:

CH2MHill

#### COMPLETION DATE:

7/22/2009

#### GEOLOGY:

Clay

#### EXCAVATION METHOD:

Herrenknecht AVN-1200 MTBM

#### MINING DIMENSIONS:

477' x 48", 450' x 42", & 1290' x 42"  
Ø

#### FINAL LINING:

60" Steel Casing

#### FOR MORE INFORMATION:

Eric Eisold, Vice President  
(410) 970-8300  
eeisold@bradshawcc.com  
Refer to Project 466