

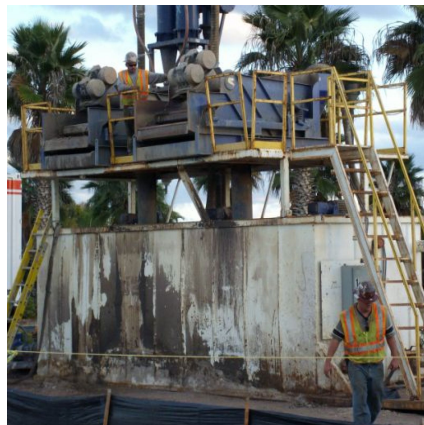
## Bartow-NE Transmission Line

St. Petersburg, FL



### PROJECT OVERVIEW AND CHALLENGES

Bradshaw was contracted to pipe jack and install a 44 inch Hobas pipe that was provided by Blevins Road Boring, Inc. The drives consisted of (2) twin runs to accommodate Progress Energy's underground transmission lines. The first twin run was 128 linear feet and the second was 207 linear feet, for a total of 607 linear feet for the project. The ground conditions consisted of soft ground, mostly sand, and was below the water table.



### PROJECT INFORMATION - 462

#### OWNER:

Progress Energy  
John Goss  
(407) 942-9526

#### ENGINEER:

Power Engineers  
Jerry Johnson  
(208) 788-3456

#### CONTRACTOR:

Blevins Road Boring, Inc.

#### COMPLETION DATE:

12/6/2007

#### GEOLOGY:

Mostly Sand

#### EXCAVATION METHOD:

Herrenknecht AVN-800 XC MTBM

#### MINING DIMENSIONS:

607' x 51" Ø

#### FINAL LINING:

44" Fiber Reinforced Pipe

#### FOR MORE INFORMATION:

Mike Wanhatalo, Project Manager  
(410) 970-8300  
mwanhatalo@bradshawcc.com  
Refer to Project 462