

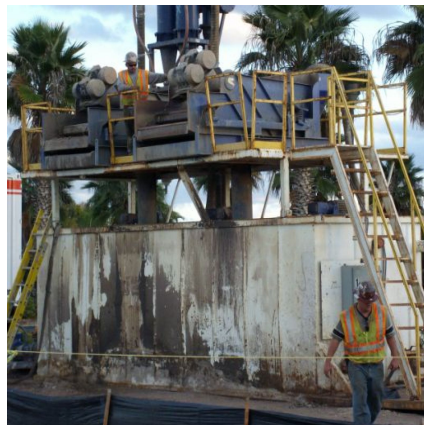
Bartow-NE Transmission Line

St. Petersburg, FL



PROJECT OVERVIEW AND CHALLENGES

Bradshaw was contracted to pipe jack and install a 44 inch Hobas pipe that was provided by Blevins Road Boring, Inc. The drives consisted of (2) twin runs to accommodate Progress Energy's underground transmission lines. The first twin run was 128 linear feet and the second was 207 linear feet, for a total of 607 linear feet for the project. The ground conditions consisted of soft ground, mostly sand, and was below the water table.



PROJECT INFORMATION - 462

OWNER:

Progress Energy
John Goss
(407) 942-9526

ENGINEER:

Power Engineers
Jerry Johnson
(208) 788-3456

CONTRACTOR:

Blevins Road Boring, Inc.

COMPLETION DATE:

12/6/2007

GEOLOGY:

Mostly Sand

EXCAVATION METHOD:

Herrenknecht AVN-800 XC MTBM

MINING DIMENSIONS:

607' x 51" Ø

FINAL LINING:

44" Fiber Reinforced Pipe

FOR MORE INFORMATION:

Mike Wanhatalo, Project Manager
(410) 970-8300
mwanhatalo@bradshawcc.com
Refer to Project 462