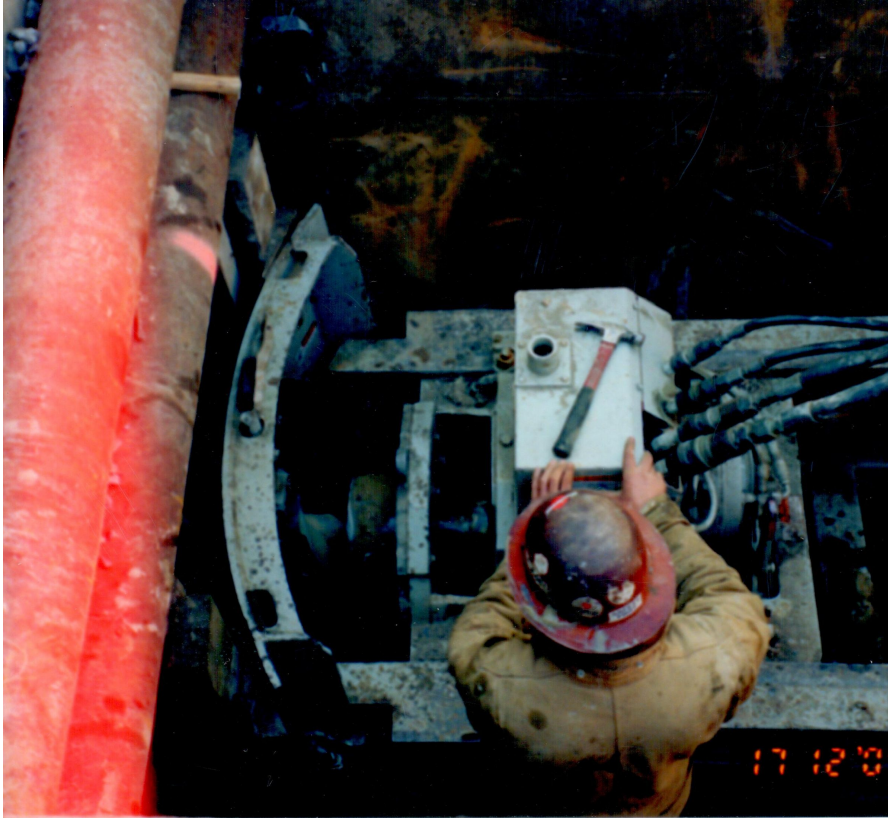


Locust Point Interceptor Baltimore, MD



PROJECT OVERVIEW AND CHALLENGES

Bradshaw Construction installed 240 linear feet of 6" vitrified clay pipe sewer using an Akkerman GBM-240 "pilot tube" guided boring system. The ground conditions were silt, sand, gravel and rubble fill. The Akkerman GBM system pipe jacks in three passes (pilot tube, cased augers, and product pipe) for installation typically to +/-1 inch of design alignment and elevation. The pilot tube was launched from a trench box shaft and received in a liner plate and steel rib shaft. It went under existing park land and its stadium style seating and was completed within Key Highway, a major city street. The primary challenge was the soil condition. The rubble fill required an emergency pit to remove the obstructions before the pilot tube and augers could complete the drive.



PROJECT INFORMATION - 424

OWNER:

City of Baltimore
Department of Public Works
Joe Paplauskas
(410) 355-2084

ENGINEER:

Rummel, Klepper, & Kahl
James Kaladis
(410) 728-2900

CONTRACTOR:

Bradshaw Construction Corporation

CONTRACT VALUE:

\$2,330,000

COMPLETION DATE:

4/1/2005

GEOLOGY:

Silt, Sand, Gravel and Rubble Fill

EXCAVATION METHOD:

Akkerman GBM-240

MINING DIMENSIONS:

240' x 10" Ø

FINAL LINING:

6" Vitrified Clay Pipe

FOR MORE INFORMATION:

Lester M. Bradshaw, Jr., President
(410) 970-8300
Lester.Bradshaw@bradshawcc.com
Refer to Project 424