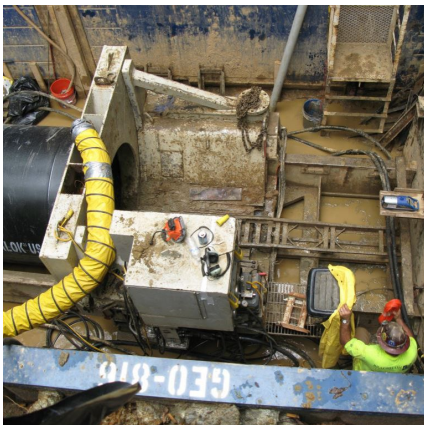


Manchester Creek Outfall, Phase II Rockhill, SC



PROJECT OVERVIEW AND CHALLENGES

Bradshaw jacked two 60 inch diameter steel casings 15 feet below Dave Lyle Blvd. and Anderson Road using a conventional tunnel boring machine (TBM) in Rock Hill, SC. The 265 and 140 linear foot drives were part of a sanitary sewer outfall project. One 30-foot reach had to be hand mined through an unanticipated rock formation. Bradshaw finished the tunnels by installing 42 inch Ductile Iron Pipe and grouting it in place.



PROJECT INFORMATION - 530

OWNER:

City of Rock Hill
Utilities Department, Engineering
Division
Scott Turner
803-329-5500
sturner@cityofrockhill.com

ENGINEER:

Wiedeman & Singleton
Troy Began
803-329-2944
tab@wiedeman.com

CONTRACTOR:

Garawaco, Inc.

COMPLETION DATE:

9/28/2013

GEOLOGY:

Residual soils, PWR, & rock

EXCAVATION METHOD:

Akkerman WM-480

MINING DIMENSIONS:

265' x 60" & 140' x 60" Ø

FINAL LINING:

42" Ductile Iron Pipe

FOR MORE INFORMATION:

Eric Eisold, Vice President
410-970-8300
eeisold@bradshawcc.com
Refer to Project 530