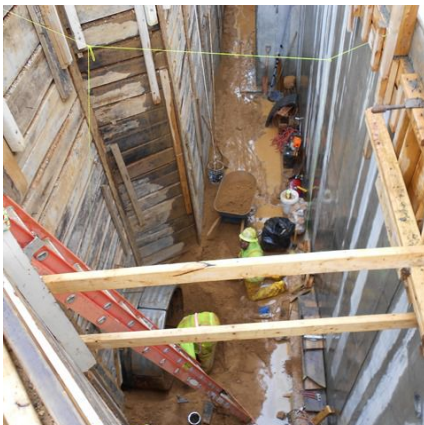


### Emergency Generator Replacement John Adams Building Washington D.C.,



#### PROJECT OVERVIEW AND CHALLENGES

Bradshaw installed 12 linear feet of a 60 inch liner plate tunnel in sandy material under a security wall footing at the John Adams Building in downtown Washington, DC. The tunnel allowed for the connection of a new stormwater management structure to an existing manhole, without disruption to surface features or pedestrian traffic.



#### PROJECT INFORMATION - 536

**OWNER:**

The Architect of the Capitol  
AOC Procurement  
202-226-2557

**ENGINEER:**

URS  
Sarah Napier  
202-872-0277

**CONTRACTOR:**

IMI, Inc.

**COMPLETION DATE:**

3/21/2014

**GEOLOGY:**

Sand

**EXCAVATION METHOD:**

Hand Mine

**MINING DIMENSIONS:**

12' x 60" Ø

**FINAL LINING:**

Liner Plate

**FOR MORE INFORMATION:**

Doug Piper, Project Manager  
410-970-8300  
dpiper@bradshawcc.com  
Refer to Project 536