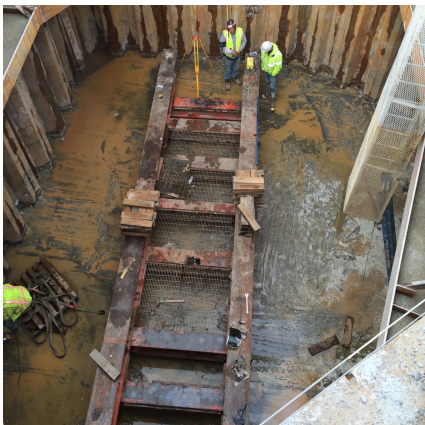


## South Platte Interceptor Brighton, CO



### PROJECT OVERVIEW AND CHALLENGES

Bradshaw Construction was contracted to mine five microtunnel crossings on Metro PAR 1088. Crossings at 168th & 160th Avenues were jacked with 96 inch steel casing. Crossings for the South Platte River & E-470 are completed and utilized 78 inch steel casing. The ground conditions consist of sand, gravel, coarse alluvium, and cobbles below the groundwater table. The scope also includes several shafts and installation of fiberglass reinforced pipe within the tunnels. Shafts were the following dimensions, (2) steel 16' x 32' x 25.5' deep, (1) steel 16' x 32' x 15' deep, (2) liner plate 18'OD x 24.5' deep, (1) liner plate 20'OD x 24.5' deep, (1) steel 20' x 24' x 28.8' deep, (1) steel 36' x 21' x 32' deep, & (1) 21' x 18' x 40.5' deep. Construction was completed June 5, 2015.



### PROJECT INFORMATION - 532

#### OWNER:

Metro Wastewater Reclamation  
District  
Engineering  
John Kuosman  
303-286-3216  
jkuosman@mwr.dot.co.us

#### ENGINEER:

HDR Engineering, Inc.  
Jeff Hemmerle  
303-764-1520  
jeffrey.hemmerle@hdrinc.com

#### CONTRACTOR:

Western Summit Constructors, Inc.

#### COMPLETION DATE:

6/5/2015

#### GEOLOGY:

Sand, Gravel, Cobbles, Coarse  
Alluvium

#### EXCAVATION METHOD:

Hydraulic Excavator  
Mini Excavator

#### MINING DIMENSIONS:

(4) 32'x16'x25.5VF, (2) 18'x24.5VF,  
& (2) 20'x24.5VF

#### FINAL LINING:

(4) Steel Sheeting  
(4) Liner Plate, Rib & Board

#### FOR MORE INFORMATION:

Todd Brown, Project Manager  
410-970-8300  
tbrown@bradshawcc.com  
Refer to Project 532