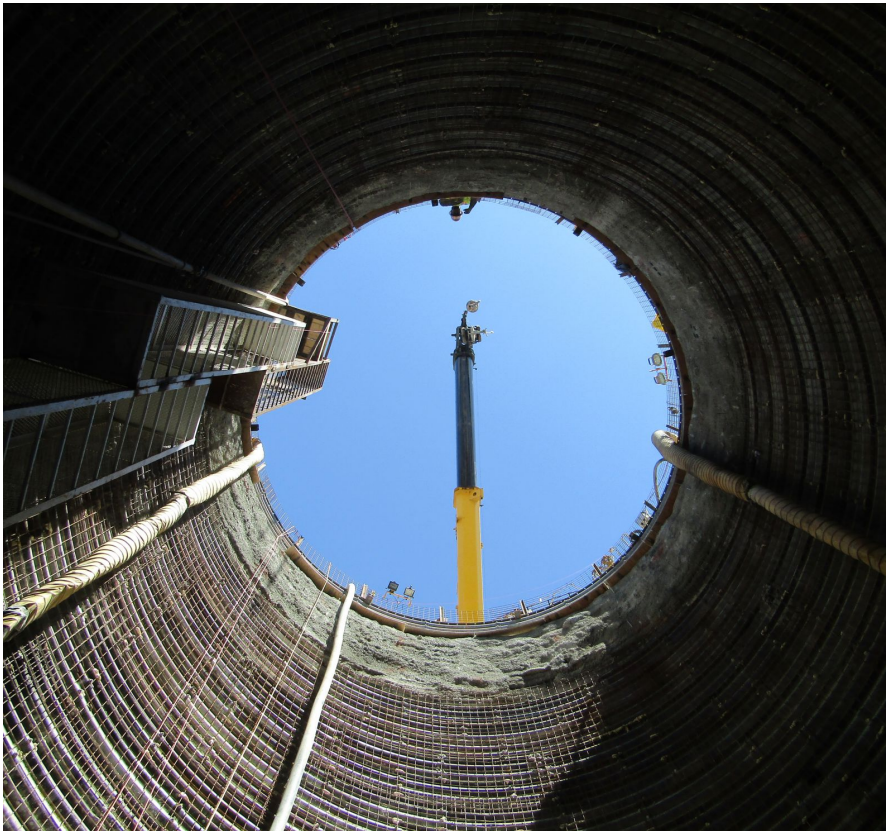


ODEC Wildcat Point Raw Water Supply Peach Bottom, PA



PROJECT OVERVIEW AND CHALLENGES

ODEC's Wildcat Point Generation Facility (WPGF) in Cecil County, MD will use water from the Conowingo Reservoir in Lancaster County, PA. The Wildcat Point Raw Water Supply Project, consisting of a pump house, wet well shaft and pipelines to convey water from the Susquehanna River to WPGF. The wet well shaft was constructed by Bradshaw to serve as both tunnel access and as the permanent intake. Spatial constraints required that both the initial and final liners be incorporated into only 12". This was achieved with a combination of liner plates and shotcrete. Combined with a grout curtain, liner plates supported the shaft 36' deep without ribs encroaching on the inside clearance. The remaining competent rock was supported with rock bolts. Concerns about cold weather and blast vibrations caused the final shotcrete to be installed after tunneling. Bradshaw retrofitted a shotcrete arm so the entire 54' shaft could be shot from the bottom slab.



PROJECT INFORMATION - 552

OWNER:

Old Dominion Electrical Corporation
804-747-0592
feedback@odec.com

ENGINEER:

Burns & McDonnell
Robert Fayard
816-822-4275
bfayard@burnsmcd.com

CONTRACTOR:

Allen Meyers, LP

COMPLETION DATE:

6/10/2016

GEOLOGY:

Weathered Schist Rock

EXCAVATION METHOD:

Conventional Drill & Blast

MINING DIMENSIONS:

54' x 23'Ø

FINAL LINING:

296" Liner Plate / Rock Bolt Initial Support
10" Shotcrete Permanent Wet Well Liner

FOR MORE INFORMATION:

Todd Brown, Project Manager
410-970-8300
tbrown@bradshawcc.com
Refer to Project 552