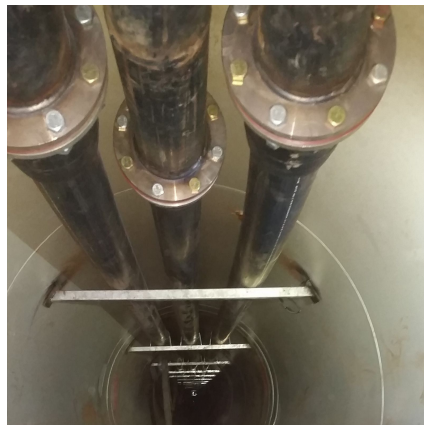


Terris Tatum Tennessee River Intake Facilities Triana, AL



PROJECT OVERVIEW AND CHALLENGES

Bradshaw construction completed a microtunneling installation of lined 60" steel casing with three (3) 6" HDPE airlines installed within the casing. The casing served as a water intake on the Tennessee River in Madison, Alabama. The MTBM was recovered underwater by the use of divers and was a true test in itself. The major challenge on the project was fighting the buoyant forces of the casing through the soft river bottom while still needing to be prepared for the presence of rock.



PROJECT INFORMATION - 560

OWNER:

Madison Utilities
Terris Tatum
256-772-0253

ENGINEER:

Krebs Engineering
Scott Lee
205-987-7411
scott.lee@krebseing.com

CONTRACTOR:

J. Cumby Construction, Inc.

COMPLETION DATE:

10/12/2016

GEOLOGY:

Clay, Sand, Gravel

EXCAVATION METHOD:

Herrenknecht AVN-1200 MTBM

MINING DIMENSIONS:

388' x 60"Ø

FINAL LINING:

(3) 6" High Density Polyethylene
Pipes

FOR MORE INFORMATION:

Mike Wanhatalo, Project Manager
410-970-8300
mwanhatalo@bradshawcc.com
Refer to Project 560