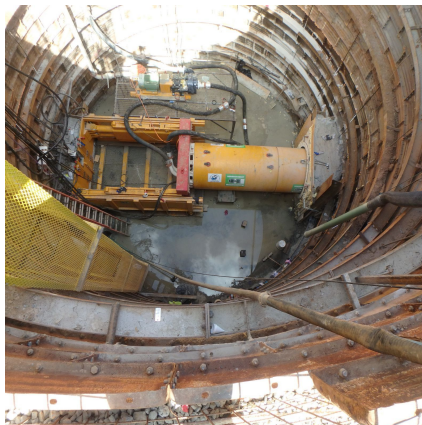


## Briar Creek Relief Sewer, Phase III Charlotte, NC



### PROJECT OVERVIEW AND CHALLENGES

Bradshaw completed this project for installation of 60 inch steel casing for a gravity sewer under boulevards and railroads. Three tunnels totaling 378 linear feet were installed using an Herrenknecht AVN1200 MTBM. The subsurface conditions varied from soft ground of clay and silt, partially weathered rock, and granite. Bradshaw also installed liner plate launch shafts for the tunnels. Challenges included working close to overhead power lines and mixed face/mixed reach ground conditions during tunneling.



### PROJECT INFORMATION - 561

#### OWNER:

Charlotte-Mecklenburg  
Utility Department  
Nicole Barlett  
704-391-4698  
nbartlett@charlottenc.gov

#### ENGINEER:

CDM Smith  
Chris Kolkhorst  
704-342-4546  
kolkhorstcm@cdmsmith.com

#### CONTRACTOR:

Sanders Construction

#### COMPLETION DATE:

11/4/2017

#### GEOLOGY:

Clay, Silt, Partially Weathered Rock,  
& Granite

#### EXCAVATION METHOD:

Herrenknecht AVN-1200 MTBM

#### MINING DIMENSIONS:

132', 110', 136' x 60"Ø

#### FINAL LINING:

42", 36", & 24" Polyvinyl Chloride  
Pipe

#### FOR MORE INFORMATION:

Mike Wanhatalo, Project  
Manager/Engineer  
410-970-8300  
mwanhatalo@bradshawcc.com  
Refer to Project 561