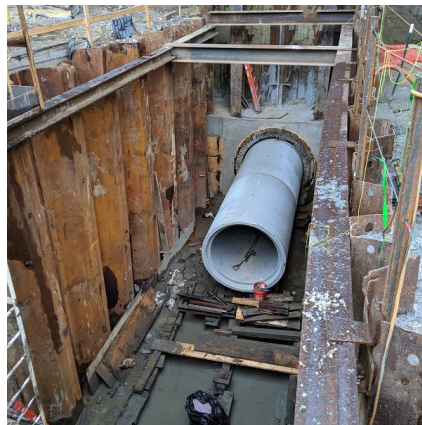
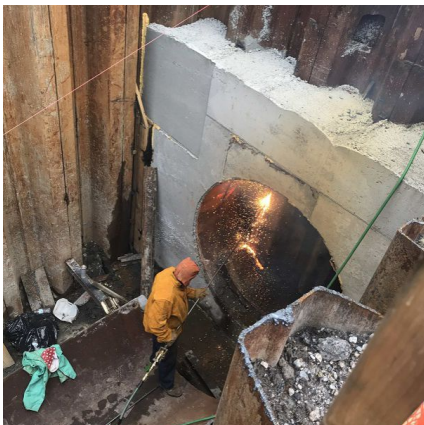


## Rte 264 - Interchange Improvements 64 WB Ramp to 264 EB Norfolk, VA



### PROJECT OVERVIEW AND CHALLENGES

Bradshaw Construction installed two 60" RCP crossings underneath I-264 and the LRT tracks for VDOT in Norfolk, VA. The tunnel crossings (107' & 274') were required for tidal flow management of the Nosehs Creek underneath the newly constructed highway overpass. The tunnels were excavated through sand and clay below the water table, with extensive obstructions encountered on the first crossing underneath the LRT tracks and Curlew Drive. Challenges included tunneling with shallow cover through the obstructions, requiring extensive surface monitoring and obstruction removal to allow passage of the MTBM. Coordination with the LRT track officials and completing the crossing within a short closure window, despite the unanticipated obstructions, was achieved through the emergency mobilization of a second crew.



### PROJECT INFORMATION - 596

#### OWNER:

VDOT  
James Klotz  
757-274-2552

#### ENGINEER:

AECOM  
757-499-4224

#### CONTRACTOR:

Tutor Perini Corporation

#### COMPLETION DATE:

8/2/2019

#### GEOLOGY:

Sand, Clay, Obstructions

#### EXCAVATION METHOD:

Herrenknecht AVN-1500 MTBM

#### MINING DIMENSIONS:

381' x 73.5" Ø

#### FINAL LINING:

60" RCP

#### FOR MORE INFORMATION:

Jordan Bradshaw  
410-970-8300  
jordan.bradshaw@bradshawcc.com  
Refer to Project 596