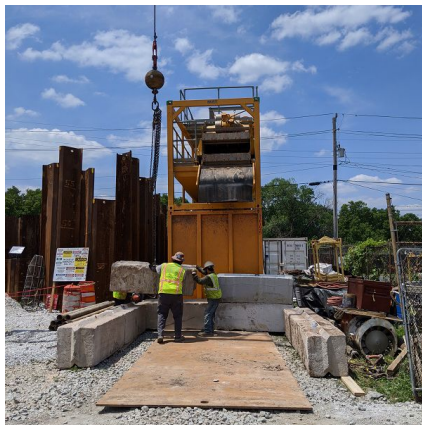
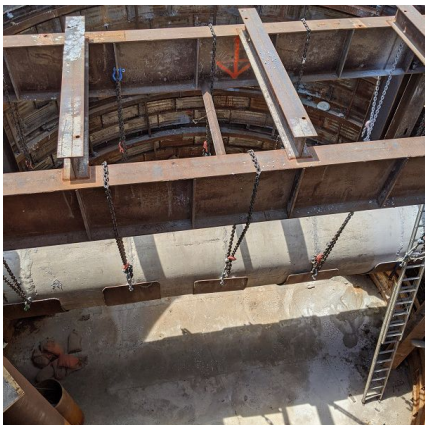


CSO 13 Consolidation Sewer - Phase II Indianapolis, IN



PROJECT OVERVIEW AND CHALLENGES

Bradshaw Construction installed two tunnels in Indianapolis, IN as part of a consolidation sewer project. The 60" FRP (62.9" OD) were direct-jacked behind an up-skinned Herrenknecht AVN 1200 MTBM. The tunnels were installed underneath a roadway through loose sand, silt and cobbles. Bradshaw was brought onto the project after initial attempts at hand-mining were unsuccessful given the raveling ground conditions. A major challenge was installing the microtunnel through the existing 18' of liner plate tunnel, sealed and backfilled before operations could commence. The excavation was challenging as the ground was incredibly loose and subject to potential heaving and settlement. Finally, line and grade control were critical as this was a direct-jack gravity sewer and the second recovery shaft contained an existing sewer line which would need to be cleared. Ultimately each challenge was met, culminating in a successful project.



PROJECT INFORMATION - 610

OWNER:

Citizens Energy Group
317-429-3978

ENGINEER:

AECOM
Sam Cain
913-201-3111

CONTRACTOR:

Reynolds Construction, LLC

COMPLETION DATE:

8/14/2020

GEOLOGY:

Sand, Silt, Cobbles

EXCAVATION METHOD:

Herrenknecht AVN-1200 MTBM

MINING DIMENSIONS:

475' x 62.9" Ø

FINAL LINING:

60" FRP

FOR MORE INFORMATION:

Jordan Bradshaw
410-970-8300
jordan.bradshaw@bradshawcc.com
Refer to Project 610