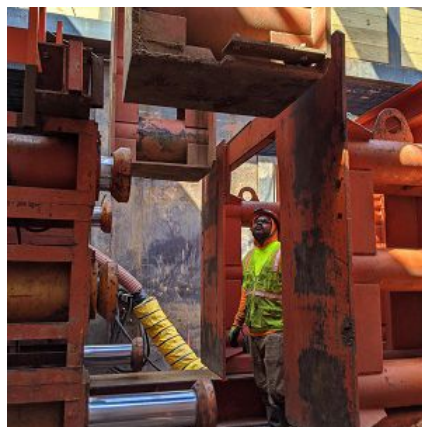
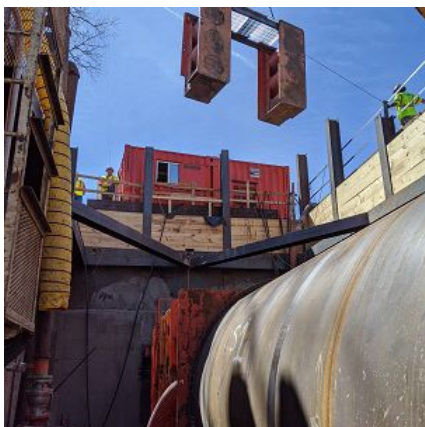


Oklahoma City Sanitary Sewer Relief Interceptor SC-0950 Oklahoma City, OK



PROJECT OVERVIEW AND CHALLENGES

Bradshaw Construction installed three steel casing tunnels totaling 915' as part of a sanitary sewer relief interceptor in Oklahoma City, OK. The 90" OD tunnels were installed behind a RASA DH-1900 MTBM, with 40' joints utilized. Bradshaw coordinated with the General Contractor to set the large casings with two excavators, installing one joint per day to allow for welders to perform the weld during night operations. The tunnels passed underneath a highway, an overpass, and BNSF tracks, through clay and sand. Challenges included properly handling and disposing of hazardous materials on one of the crossings, preventing settlement underneath the railroad and highway, and coordinating with both the General Contractor and their welding subcontractor to maximize the project schedule.



PROJECT INFORMATION - 603

OWNER:

Oklahoma City Water Utilities Trust
405-297-2833

ENGINEER:

Cabbiness Engineering, LLC
405-310-6435

CONTRACTOR:

McKee Utility Contractors, Inc.

COMPLETION DATE:

5/27/2020

GEOLOGY:

Sand, Clay

EXCAVATION METHOD:

RASA DH-1900 MTBM

MINING DIMENSIONS:

915' x 90" Ø

FINAL LINING:

72" FRP

FOR MORE INFORMATION:

Jordan Bradshaw
410-970-8300
jordan.bradshaw@bradshawcc.com
Refer to Project 603