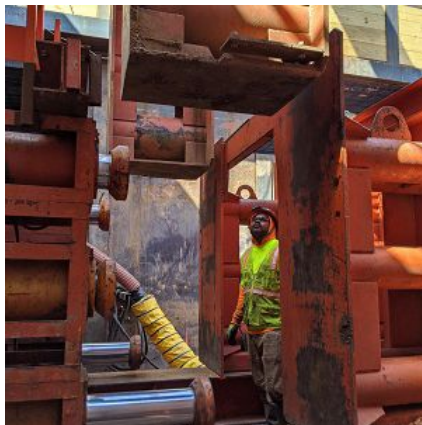
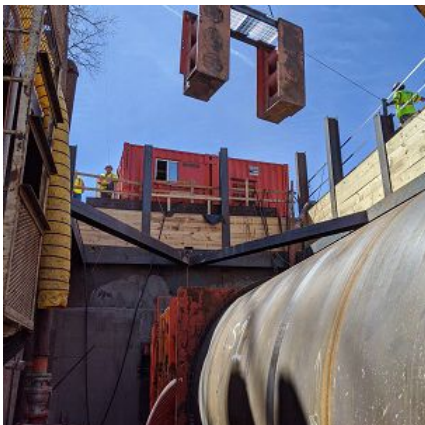


## Oklahoma City Sanitary Sewer Relief Interceptor SC-0950 Oklahoma City, OK



### PROJECT OVERVIEW AND CHALLENGES

Bradshaw Construction installed three steel casing tunnels totaling 915' as part of a sanitary sewer relief interceptor in Oklahoma City, OK. The 90" OD tunnels were installed behind a RASA DH-1900 MTBM, with 40' joints utilized. Bradshaw coordinated with the General Contractor to set the large casings with two excavators, installing one joint per day to allow for welders to perform the weld during night operations. The tunnels passed underneath a highway, an overpass, and BNSF tracks, through clay and sand. Challenges included properly handling and disposing of hazardous materials on one of the crossings, preventing settlement underneath the railroad and highway, and coordinating with both the General Contractor and their welding subcontractor to maximize the project schedule.



### PROJECT INFORMATION - 603

**OWNER:**

Oklahoma City Water Utilities Trust  
405-297-2833

**ENGINEER:**

Cabbiness Engineering, LLC  
405-310-6435

**CONTRACTOR:**

McKee Utility Contractors, Inc.

**COMPLETION DATE:**

5/27/2020

**GEOLOGY:**

Sand, Clay

**EXCAVATION METHOD:**

RASA DH-1900 MTBM

**MINING DIMENSIONS:**

915' x 90" Ø

**FINAL LINING:**

72" FRP

**FOR MORE INFORMATION:**

Jordan Bradshaw  
410-970-8300  
jordan.bradshaw@bradshawcc.com  
Refer to Project 603