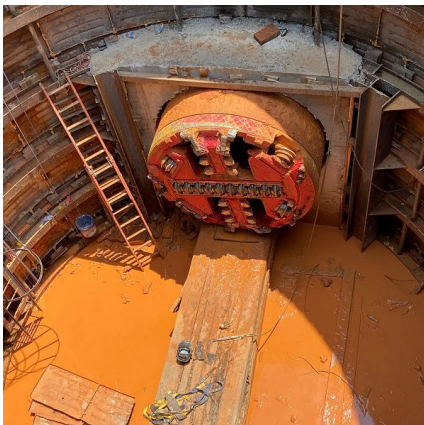


IPL -19
Athens, TX



PROJECT OVERVIEW AND CHALLENGES

Bradshaw Construction Corporation has completed work on an 84" steel water line project in Athens, TX, which consisted of two tunnels, spanning 1,712 LF. The tunnels were split up into a 903 LF drive and an 809 LF drive which were both mined utilizing 99.5" steel casing behind a Herreknecht AVND 1800AB MTBM. The first and longer of the two tunnels, encountered layers of clayey queens city sand that transitioned into sandy queens city sand. The tunnel was mined out of a 38' rib and liner plate shaft with little evidence of ground water. The second tunnel was launched out of a secant pile shaft, and mined under a busy section of union Pacific railroad. During the drive, the MTBM encountered ground conditions within the Sandy and Clayey Wilcox Group, but transitioned late to a sandy fluvialite deposit. The entirety of the drive was mined under ground water. The final tunnel was completed later September 2023.



PROJECT INFORMATION - 627

OWNER:

Tarrant Regional Water District
Shelly Hattan
817-291-3532
Shelley.Hattan@trwd.com

ENGINEER:

Brierly Associates
Nancy Nuttbrock
307-421-7100
NNuttbrock@BrierlyAssociates.com

CONTRACTOR:

Traylor Brothers

COMPLETION DATE:

10/13/2023

GEOLOGY:

Sandy/Clayey Wilcox Group

EXCAVATION METHOD:

HK AVN-1800 MTBM

MINING DIMENSIONS:

1712' x 99.5" Ø steel casing

FINAL LINING:

84" WSP

FOR MORE INFORMATION:

Chris Flanagan, Project Manager
410-970-8300
cflanagan@bradshawcc.com
Refer to Project 627