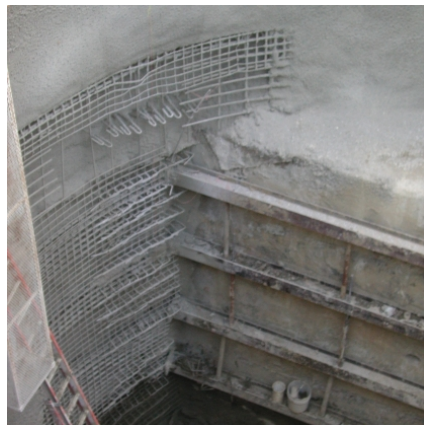


Pentagon Metro Entrance Facility Washington, DC



PROJECT OVERVIEW AND CHALLENGES

The Metro Entrance Facility was a security-driven project designed to eliminate the direct entry to the Pentagon from the Metro tunnel and provide a secure screening facility for Pentagon visitors. As part of the project, a 50' deep elevator was constructed between the existing underground station and connecting to the existing escalator passage for handicap access. Bradshaw was selected to design-build the unique elevator shaft. Teamed up with Jenny Engineering, who designed the eccentric shaft, Bradshaw excavated & supported the sand & gravel deposits with a 34' diameter SEM type shaft using lattice girders, wire mesh & shotcrete. The shaft was truncated on either side as it was excavated against the existing station and escalator passage requiring heavy beams and extra shotcrete.



PROJECT INFORMATION - 388

OWNER:

Pentagon Renovation Office
Wendy Thompson
703.693.8965

ENGINEER:

Jenny Engineering
Prakash Donde
973.379.6699

CONTRACTOR:

Hensel Phelps

COMPLETION DATE:

3/22/2002

GEOLOGY:

Sand, Gravel

EXCAVATION METHOD:

SEM/NATM

MINING DIMENSIONS:

34' Ø x 50VF

FINAL LINING:

N/A

FOR MORE INFORMATION:

Eric Eisold, Vice President
410.970.8300
eeisold@bradshawcc.com
Refer to Project 388